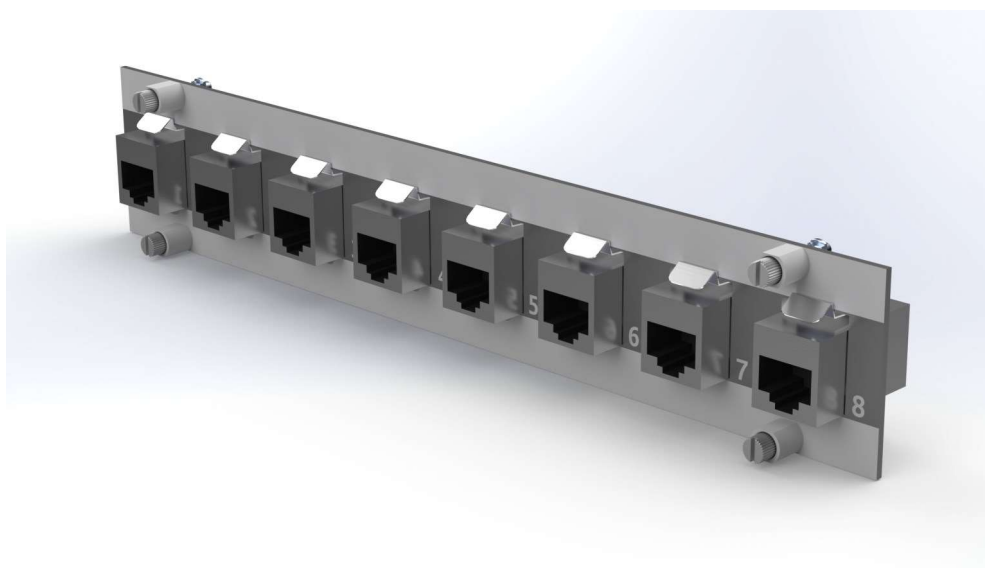


FastPatch™

PPMRJ1A RJ45 x8

The PPMRJ1A is designed to present and organise RJ45 connections, with a write on strips it makes cable management more efficient. Standardised with 100Mb/s RJ45 keystone, the PPMRJ1A is also available with 1Gb/s and 10Gb/s compliant variants. All RJ45 sockets are shielded and offer over 500 mate cycles. The panel fits our fastpatch FFPR1A frame in a half width format.



Specifications	
Standard	
Operating Temperature (°C)	
Width (mm)	215
Height (mm)	40

Ordering information	
Website Location	Product Code
SI-PP-PPMRJ1A	UP-PPMRJ1A